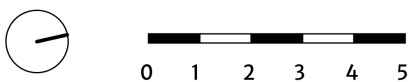
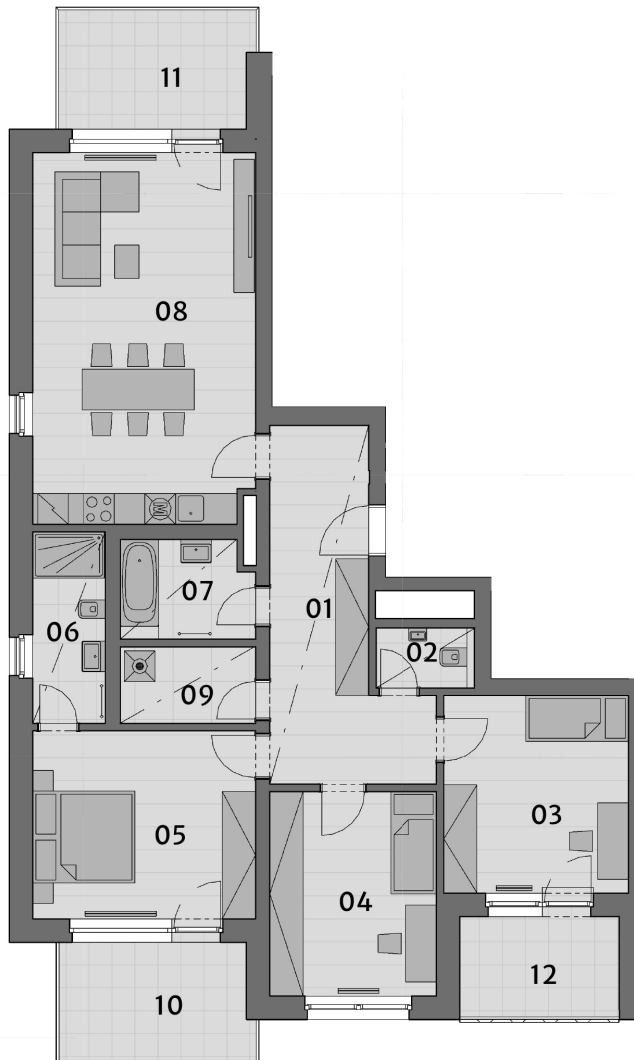


FLAT M.12.2

Orientation	E,S,W
Floor	12FL
Layout	4+kk

Balcony	17,40 m ²
Terrace	6,30 m ²
01 Hallway	17,20 m ²
02 WC	2,10 m ²
03 Room	14,20 m ²
04 Room	13,10 m ²
05 Bedroom	16,30 m ²
06 Bathroom	5,30 m ²
07 Bathroom	4,90 m ²
08 Living room	31,70 m ²
09 Pantry	4,00 m ²
Cellar	1,80 m ²
Parking space	

Usable area	108,80 m²
Total Area	117,00 m²



Warning notice: The layout of the floor plan represents layout solution of the apartment. The displayed equipment, furniture, wardrobes, kitchen with appliances and washing machines are not included in the apartment's supply. This equipment is for illustrative purposes only. The specification for construction, surface treatment and equipment is the subject of the "Qualitative Standard" appendix. The usable area of the apartment may change during construction. The location of the ZP is schematically shown in the floor plan. Indicates the extent of the ceiling, indicating the shape of the roof with light heights.

CONTACTS

Tel.: 602 226 156
Email: prodej@cpipg.com
www.cpirezidence.cz

MORTGAGE CENTRE

hypoteky@cpipg.com

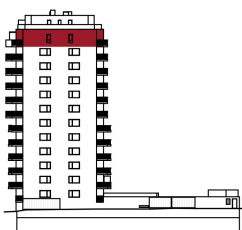
SALES CENTRE

The Quadrio building
Purkyňova 2121/3,
110 00 Praha 1

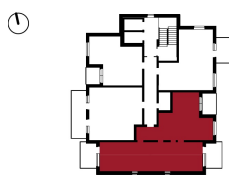
Rezidence Malkovského s.r.o.

Vladislavova 1390/17
110 00 Praha 1

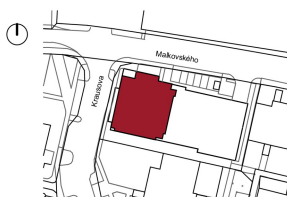
Generated: 03. 07. 2022



12.FL



FLOOR PLAN



CONDITIONS