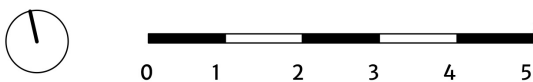
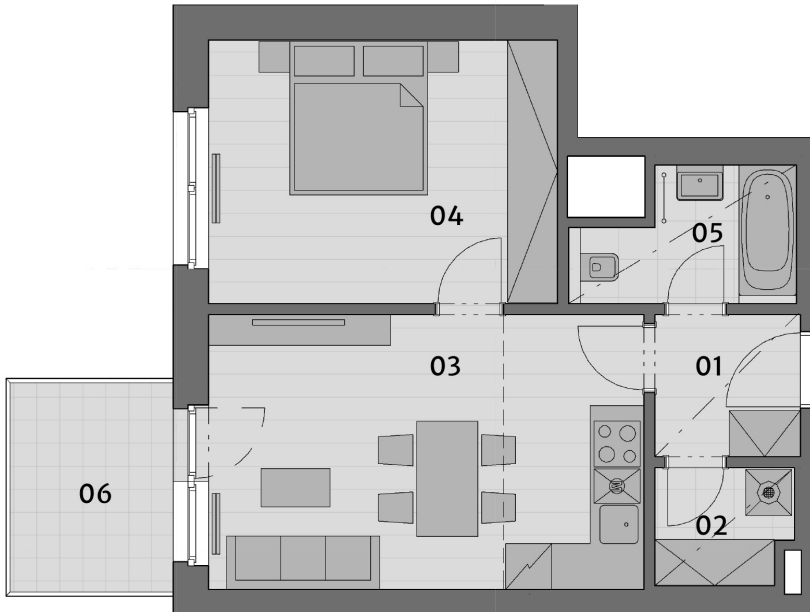


# FLAT M.10.4

<b>Orientation</b>	<b>W</b>
<b>Floor</b>	<b>10FL</b>
<b>Layout</b>	<b>2+kk</b>

Balcony	5,80 m <sup>2</sup>
01 Hallway	3,90 m <sup>2</sup>
02 Pantry	2,60 m <sup>2</sup>
03 Living room	20,70 m <sup>2</sup>
04 Bedroom	15,70 m <sup>2</sup>
05 Bathroom	4,30 m <sup>2</sup>
Cellar	3,40 m <sup>2</sup>
Parking space	

<b>Usable area</b>	<b>47,20 m<sup>2</sup></b>
<b>Total Area</b>	<b>51,30 m<sup>2</sup></b>



Warning notice: The layout of the floor plan represents layout solution of the apartment. The displayed equipment, furniture, wardrobes, kitchen with appliances and washing machines are not included in the apartment's supply. This equipment is for illustrative purposes only. The specification for construction, surface treatment and equipment is the subject of the "Qualitative Standard" appendix. The usable area of the apartment may change during construction. The location of the ZP is schematically shown in the floor plan. Indicates the extent of the ceiling, indicating the shape of the roof with light heights.

## CONTACTS

Tel.: 602 226 156  
Email: [prodej@cpipg.com](mailto:prodej@cpipg.com)  
[www.cpirezidence.cz](http://www.cpirezidence.cz)

## MORTGAGE CENTRE

[hypoteky@cpipg.com](mailto:hypoteky@cpipg.com)

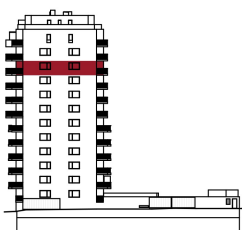
## SALES CENTRE

The Quadrio building  
Purkyňova 2121/3,  
110 00 Praha 1

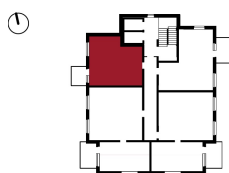
## Rezidence Malkovského s.r.o.

Vladislavova 1390/17  
110 00 Praha 1

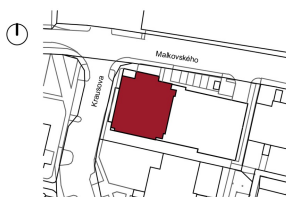
Generated: 03. 07. 2022



10.FL



FLOOR PLAN



CONDITIONS