

# FLAT A1.5.08



<b>Orientation</b>	<b>W</b>
<b>Floor</b>	<b>5FL</b>
<b>Layout</b>	<b>2+kk</b>

Balcony	10,0 m <sup>2</sup>
Předsíň	7,6 m <sup>2</sup>
Obývací pokoj	20,8 m <sup>2</sup>
Ložnice I	12,1 m <sup>2</sup>
Koupelna	5,3 m <sup>2</sup>
Parking space	

<b>Usable area</b>	<b>45,8 m<sup>2</sup></b>
<b>Total Area</b>	<b>49,4 m<sup>2</sup></b>

## CONTACTS

Tel.: 602 226 156  
Email: [prodej@cpipg.com](mailto:prodej@cpipg.com)  
[www.cpirezidence.cz](http://www.cpirezidence.cz)

## MORTGAGE CENTRE

[hypoteky@cpipg.com](mailto:hypoteky@cpipg.com)

## SALES CENTRE

Quadrio, Purkyňova 2121/3,  
110 00 Praha 1

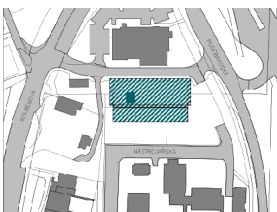
## BYTY LEHOVEC, S.R.O.

Vladislavova 1390/17,  
Nové Město, 110 00 Praha 1  
Company ID: 066 76 511



0 1 2 3 4 5m

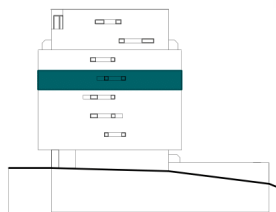
Warning notice: The layout of the floor plan represents layout solution of the apartment. The displayed equipment furniture, wardrobes, kitchen with appliances and washing machines are not included in the apartment's supply. This equipment is for illustrative purposes only. The specification for construction, surface treatment and equipment is the subject of the "Qualitative Standard" appendix. The usable area of the apartment may change during construction. The location of the ZP is schematically shown in the floor plan. Indicates the extent of the ceiling, indicating the shape of the roof with light heights.



**CONDITIONS**



**FLOOR PLAN**



**5.FL**