

FLAT 5.04

Orientation	NW
Floor	5FL
Layout	2+kk

Balcony	2,53 m ²
Předsíň	9,14 m ²
Obývací pokoj	36,94 m ²
Ložnice I	20,84 m ²
Koupelna	4,98 m ²
Komora I	2,35 m ²
Komora II	5,05 m ²
Cellar	6,20 m ²

Usable area	79,30 m²
Total Area	86,57 m²



CONTACTS

Tel.: 602 226 156

Email: prodej@cpipg.com

www.cpirezidence.cz

MORTGAGE CENTRE

hypoteky@cpipg.com

SALES CENTRE

The Quadrio building
Purkyňova 2121/3,
110 00 Praha 1

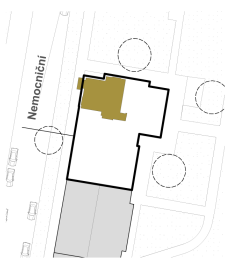
CPI Flats, a.s.

Vladislavova 1390/17
110 00 Praha 1

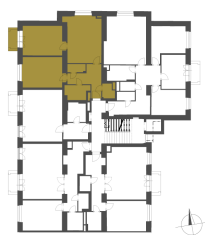
Generated: 19. 07. 2019



Warning notice: The layout of the floor plan represents layout solution of the apartment. The displayed equipment, furniture, wardrobes, kitchen with appliances and washing machines are not included in the apartment's supply. This equipment is for illustrative purposes only. The specification for construction, surface treatment and equipment is the subject of the "Qualitative Standard" appendix. The usable area of the apartment may change during construction. The location of the ZP is schematically shown in the floor plan. Indicates the extent of the ceiling, indicating the shape of the roof with light heights.



CONDITIONS



FLOOR PLAN



5.FL