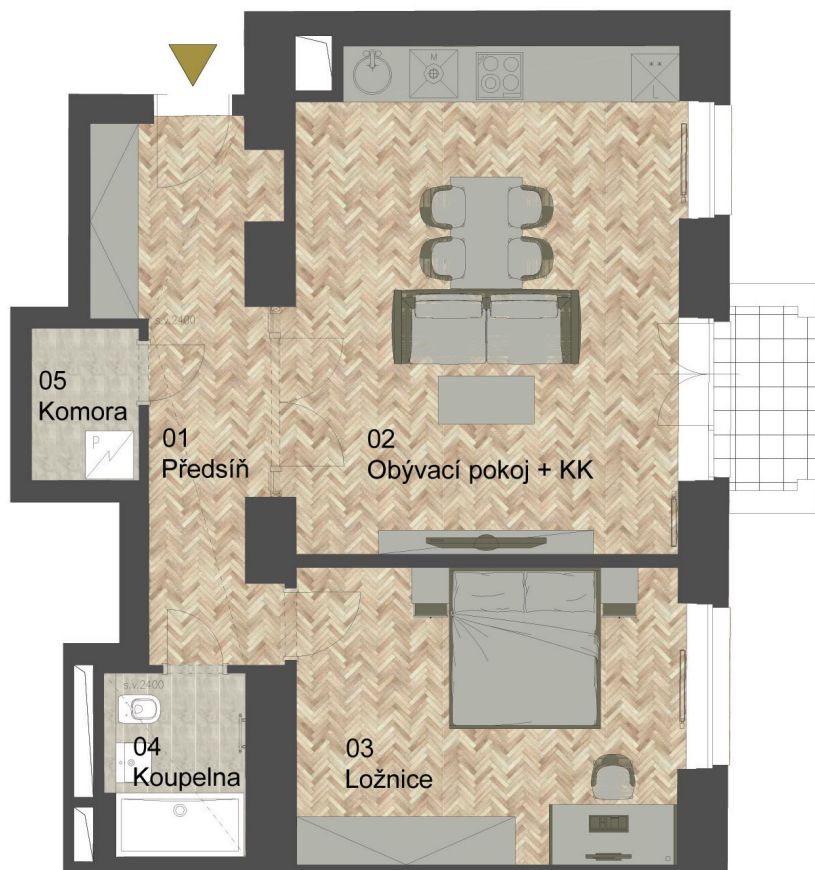


FLAT 3.01

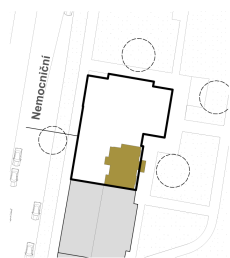
Orientation	E
Floor	3FL
Layout	2+kk

Balcony	2,54 m ²
Předsíň	11,61 m ²
Obývací pokoj	30,80 m ²
Ložnice I	17,89 m ²
Koupelna	3,72 m ²
Komora I	2,54 m ²
Cellar	2,94 m ²

Usable area	66,56 m²
Total Area	73,03 m²



Warning notice: The layout of the floor plan represents layout solution of the apartment. The displayed equipment, furniture, wardrobes, kitchen with appliances and washing machines are not included in the apartment's supply. This equipment is for illustrative purposes only. The specification for construction, surface treatment and equipment is the subject of the "Qualitative Standard" appendix. The usable area of the apartment may change during construction. The location of the ZP is schematically shown in the floor plan. Indicates the extent of the ceiling, indicating the shape of the roof with light heights.



CONDITIONS



FLOOR PLAN



3.FL

CONTACTS

Tel.: 602 226 156

Email: prodej@cpipg.com

www.cpirezidence.cz

MORTGAGE CENTRE

hypoteky@cpipg.com

SALES CENTRE

The Quadrio building
Purkyňova 2121/3,
110 00 Praha 1

CPI Flats, a.s.

Vladislavova 1390/17
110 00 Praha 1